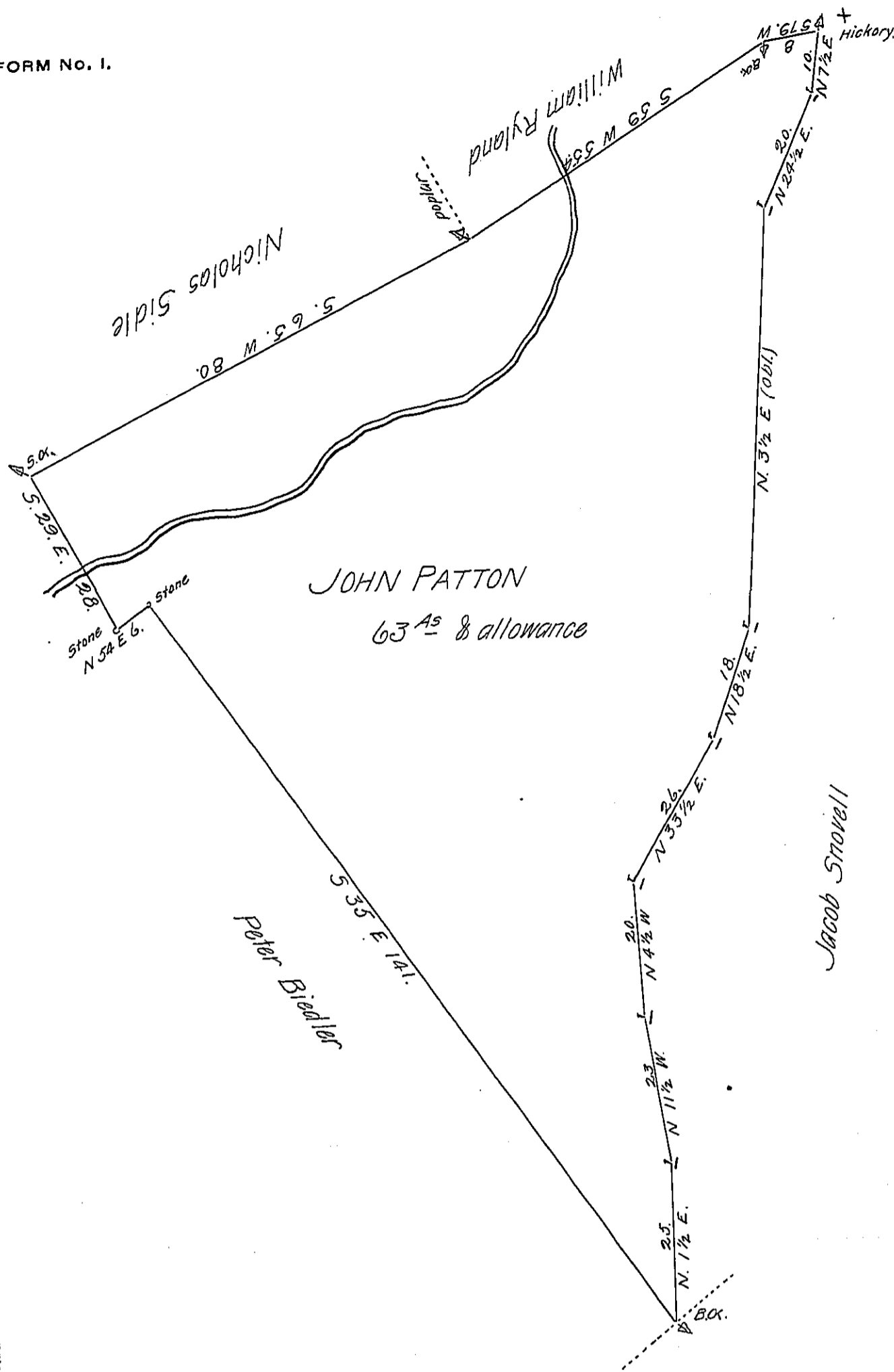


FORM No. 1.



A draught of a Tract of Land Situate in Gumru Township Berks County Containing sixty three Acres & allowance of Six pr. Cent for Roads &c. being part of a larger Tract which was granted to John Patton in pursuance of a Warrant bearing date the 6<sup>th</sup> day of August 1765. Resurveyed & divided the 5<sup>th</sup> day of August A.D. 1809.

To Andrew Portor Esq. }  
Surveyor Gen. Penna

P. John M. Hyneman D.S.

IN TESTIMONY that the above is a copy of the original remaining on file in the Department of Internal Affairs of Pennsylvania, made conformably to an Act of Assembly approved the 16th day of February, 1833, I have hereunto set my Hand and caused the Seal of said Department to be affixed at Harrisburg, this twentyfifth day of June 1906.

*George D. ...*  
Secretary of Internal Affairs.